



Hubert Grove, Clapham, SW9

2 bedroom flat - conversion for sale

£675,000

Share of Freehold

Property Details

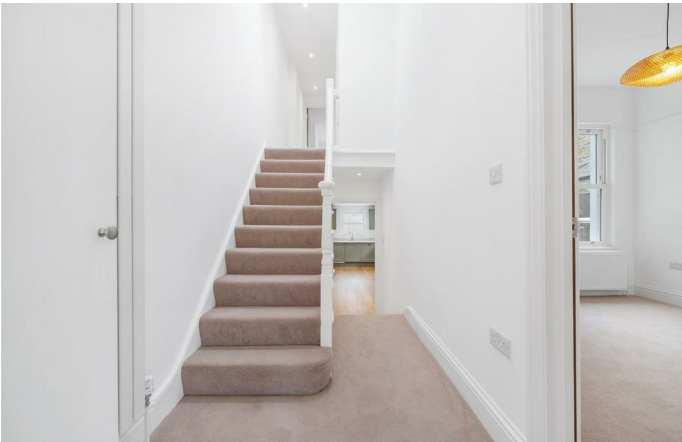
A beautifully refurbished two double bedroom flat, occupying the top two floors of a handsome Victorian house on a quiet residential street. A private staircase leads to a bright and spacious first floor. The front-facing reception room boasts a bay window, high ceilings, Victorian fireplace, and engineered wood flooring, creating an elegant yet cosy space. To the rear, the stunning kitchen/dining area spans the full width of the property, complete with green cabinetry, Quartz worktops, AEG appliances, and ample room for entertaining. Both bedrooms are generous doubles with fitted storage and period detailing. One sits on the first floor, the other on the top floor alongside a sleek, contemporary bathroom. A large demised loft offers significant storage and potential for future development (STPP). Located just eight minutes from Clapham North station and close to Clapham High Street's vibrant amenities, the flat also offers easy access to Brixton, Stockwell and Clapham Common. With a share of freehold and offered chain-free, this is an exceptional home in a superb location.

Council tax band D

EPC rating C (79)

Features

- Two double bedrooms
- Victorian conversion flat
- Recently refurbished to a high standard
- Bright and airy
- Neutrally presented throughout
- Clapham High street and the Northern Line an eight-minute walk
- Brixton a fifteen-minute walk
- Large demised loft space - potential to extend
- Chain-free
- Share of freehold





Hubert Grove, Clapham, SW9

Hubert Grove, SW9
2 Bedroom Flat

APPROXIMATE GROSS INTERNAL AREA WITH LOFT: 1264 SQ FT / 117.4 SQ M

APPROXIMATE GROSS INTERNAL AREA WITHOUT LOFT: 924 SQ FT / 85.8 SQ M



While we try our very best, floor plans are produced as a guide only and we take no responsibility for the precise accuracy with which any property is represented.

Hubert Grove, Clapham, SW9

